



## 2021 Member Benefits

## Member Snapshot



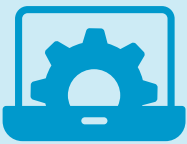
### Cultivate Connections

- Events - Both Virtual and In-Person
- Journal Club - Monthly Online Discussion for Members Only
- Online Membership Directory
- Social Channels - LinkedIn, Instagram, Twitter, Facebook
- Opportunities to Be Featured in a Member Spotlight Online



### Education at Member Rates

- Annual Summit
- Hosted Tracks at Professional Conferences - SuperBones SuperWounds, Desert Foot, World Union of Wound Healing Society Congress
- Weekly Webinars
- Other Partner Organization Events
- Journal of Wound Care Subscription



### Access to Industry Information

- e-Newsletter, Featuring Links to Research-Based Journal Articles
- Wound Central Magazine
- Trip Medical Database
- Public Policy and Advocacy
- Quality of Care Wound Glossary



### Professional Development

- CE Credits Through Programming
- FAAWC Fellowship Program
- Career Center
- Volunteer / Leadership Development Opportunities
- Establish Yourself as a Thought Leader:
  - » Online Blog Posts
  - » Articles in Journal of Wound Care and Wound Central
  - » Present Webinars and Sessions at Events
- Recognition Through our Annual Awards Program
- Inclusion in AAWC Wound Clinic / Facility Directory



### Organizational Resources

- Member Discount Round-Up for Clinicians and Healthcare Providers
- Access to v-Tail App, Connecting You to Industry Vendor Reps

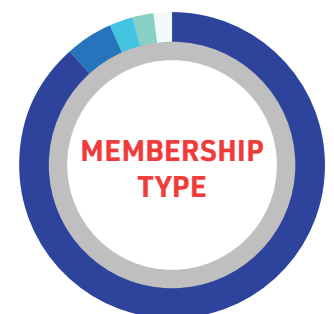
Please note that no benefits list is ever complete - We are here to serve your needs, and if you could use assistance in a way not detailed on this list, please let us know, so that we can help!



- 34% MD, DO
- 24% Registered Nurse
- 12% Nurse Practitioner
- 11% Doctor of Podiatric Medicine
- 9% Physical Therapist
- 4% Licensed Practical Nurse
- 3% Corp/Mfg
- 3% Other, Including PhDs and PAs



- 40% Clinic/Wound Care Center
- 23% Hospital
- 11% Private Office or Facility
- 7% Long Term Care Facility
- 5% Corporate/Industry
- 4% Other
- 4% University/College
- 3% Home Health Care
- 3% VA Health System Facility



- 88% Individual
- 6% VA
- 2% Retired
- 2% Corp/Mfg
- 2% Student